



Helping you Perform at your Best!

Table of Contents

 Executive Jackets2-6	 Waist Aprons.....30-31
 Chef Jackets7-9	 Headwear.....32-34
 Crew Jackets10-13	 Front Of The House.....35-36
 Shirts14-15	 Towels.....37-38
 Pants.....16-19	 Chef Revival Cutlery39
 Bib Aprons20-26	 Sizing Chart40
 Bistro Aprons.....27-29	 Custom Embroidery41

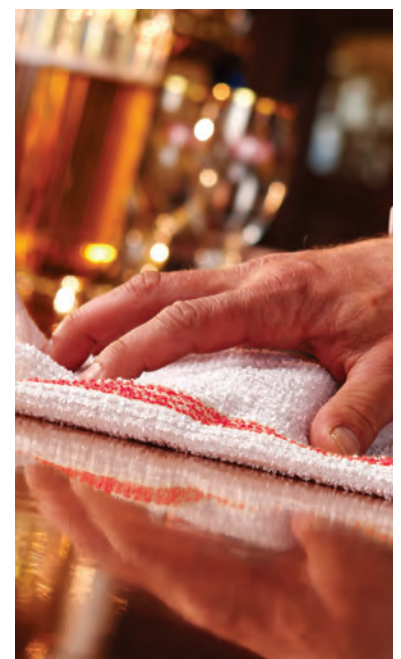
About us

Chef Revival helping chefs and cooking staff look and perform at their best

Headquartered in Southbridge, Massachusetts, Chef Revival has partnered with Dexter-Russell, the largest manufacturer of professional cutlery in the United States. Chef Revival provides quality food service apparel of all types and sizes that deliver long-lasting performance.

Selecting Chef Revival, you can have confidence that you are getting excellent features of comfort, fabrics and styles! Chef Revival apparel specializes and meets the needs for people who know what it is like to run a commercial kitchen. Choose from our selection of chef wear jackets, pants, hats, aprons - including front of the house, and more, in many styles and colors that are functional, durable and easy to clean.

For a full up-to-date listing, please visit our website chefrevival.com





Chef-tex® High Performance Fabric



Our high performance poly-cotton fabric outperforms the competition

Moisture management - Chef-tex® is comprised of nano fibers that are 1/100th the size of a human hair and act as a shield around the main fiber to help Chef-tex dry 33% faster than the competition.

Comfort - This 6.75 oz fabric is smooth and luxurious as a result of a patented technology to ensure the softness is permanent and consistent, even after multiple washings.

Stain release - The fabric handles the toughest kitchen stains. Our patented process, directly applied to the fiber, prevents spreading and re-disposition in the wash. This is not a topical additive, which typically washes off; instead, this stain release performs throughout the life of the garment.

Color retention - These fabrics hold their color through the life cycle of the product, even in whites. Our deep dye technology resists fading from sunlight, washings and oxidation.

Shape retention - This fabric holds its form better and longer than fabrics used in comparable products, leading to a wrinkle resistant, longer lasting jacket.

EZ-Blend™ Fabric

A versatile poly-cotton blend combining comfort, durability, and ease-of-cleaning as an economic solution for the professional chef.

OUR 3 PERFORMANCE LEVELS

Gold: Executive Jackets with Chef-tex®

Silver: Chef Jackets

Bronze: Crew Jackets





Corporate Jackets

Stylish chef jackets are the perfect choice for the Executive Chef whose highly diverse work schedule demands the very best!

- Chef-tex® material
- Double-breasted with black piping
- Cross collar neckline
- Drop shoulder and yoke
- 12 cloth covered buttons
- Double stitched for durability
- Sleeve thermometer and pen pocket

cheftex

BUTTON STYLE



White Cloth Covered

Ladies jacket perfectly tailored for a flattering female fit

Side vents on ladies jacket for a better fit



Black piping

ITEM	DESCRIPTION	MATERIAL	COLOR	BUTTON	SIZE
J008	Men's Long Sleeve Jacket	Chef-tex®	White	White Cloth	XS-5X
LJ008	Ladies Long Sleeve Jacket	Chef-tex®	White	White Cloth	XS-2X



Brigade Jackets

- Chef-tex® material
- Double-breasted with black piping
- Traditional collar
- Drop shoulder and yoke
- Double stitched for durability
- 12 push-through stud buttons
- Chest pocket (men's jacket only)
- Sleeve thermometer and pen pocket

cheftex[®]

Thermometer and pen pocket

Black piping

BUTTON STYLE



Black Push-Through Stud

Ladies jacket perfectly tailored for a flattering female fit

Side vents on ladies jacket for a better fit



ITEM	DESCRIPTION	MATERIAL	COLOR	BUTTON	SIZE
J044	Men's Long Sleeve Jacket	Chef-tex [®]	White	Black Stud	XS-5X
LJ044	Ladies Long Sleeve Jacket	Chef-tex [®]	White	Black Stud	XS-2X



Cuisinier Jackets

- Chef-tex® material
- Double-breasted
- Traditional collar
- Drop shoulder and yoke
- 12 cloth covered buttons
- Double stitched for durability
- Sleeve thermometer and pen pocket



BUTTON STYLE



White Cloth Covered



Black Cloth Covered

ITEM	DESCRIPTION	MATERIAL	BUTTON	COLOR	SIZE
J015	Long Sleeve Jacket	Chef-tex®	White Cloth	White	XS-5X
J017BK	Long Sleeve Jacket	Chef-tex®	Black Cloth	Black	XS-5X



Traditional Jackets

Thermometer and pen pocket on sleeve



- Chef-tex® material
- Double-breasted
- Traditional collar
- Drop shoulder and yoke
- Double stitched for durability
- 10 black Chef logo buttons
- Sleeve thermometer and pen pocket



BUTTON STYLE



Black Chef Logo



Drop shoulder for flexibility and comfort



Chef Revival's Traditional and Cuisinier jackets are the perfect choice for the hardworking chef who requires a lightweight, yet strong and durable fabric. Made with Chef-tex® high performance poly-cotton to absorb moisture better than other fabrics for faster drying and keeps you cool in hot kitchens.

ITEM	DESCRIPTION	MATERIAL	COLOR	BUTTON	SIZE
J045BK	Short Sleeve Jacket	Chef-tex®	Black	Black Chef	XS-5X
J030BK	Long Sleeve Jacket	Chef-tex®	Black	Black Chef	XS-5X



Metro Jackets

- Chef-tex® material
- Cross collar neckline
- Drop shoulder and colored yoke
- 6 hidden snap buttons
- Double stitched for durability
- Sleeve thermometer and pen pocket



Hidden snap closure



ITEM	DESCRIPTION	MATERIAL	COLOR	BUTTON	SIZE
J027	Long Sleeve Jacket	Chef-tex®	White w/Black	Hidden Snap	XS-5X
J027RD	Long Sleeve Jacket	Chef-tex®	White w/Red	Hidden Snap	XS-5X
J027BL	Long Sleeve Jacket	Chef-tex®	White w/Blue	Hidden Snap	XS-5X

Available for a Limited Time Only – Custom HK embroidered logo from the hit TV show Hell's Kitchen

ALL OUR JACKETS ARE EASILY EMBROIDERED WITH YOUR FAVORITE SEAL, LOGO OR NAME. SEE PAGE 41 FOR DETAILS.



Performance Series Jackets

CHEF JACKETS

- EZ-Blend™ material
- Double-breasted with traditional collar
- Double stitched for durability
- Breathable mesh on back
- 8 chef logo buttons
- Sleeve thermometer and pen pocket
- Side vents to keep you cool



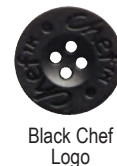
EZ-Blend™ is a versatile poly-cotton blend combining comfort, durability, and ease-of-cleaning.

PERFORMANCE
SERIES



ITEM	DESCRIPTION	MATERIAL	COLOR	BUTTON	SIZE
J200	Long Sleeve Jacket	EZ-Blend™	White	White Chef	XS-3X
J200BK	Long Sleeve Jacket	EZ-Blend™	Black	Black Chef	XS-3X
J200GR*	Long Sleeve Jacket	EZ-Blend™	Grey/Black	Black Chef	XS-3X
J205	Short Sleeve Jacket	EZ-Blend™	White	White Chef	XS-3X
J205BK	Short Sleeve Jacket	EZ-Blend™	Black	Black Chef	XS-3X
J205GR*	Short Sleeve Jacket	EZ-Blend™	Grey/Black	Black Chef	XS-3X

BUTTON STYLE





Classic Long Sleeve Jackets

- EZ-Blend™ material
- Double-breasted with traditional collar
- Drop shoulder and yoke
- 8 buttons
- Sleeve thermometer and pen pocket
- Double stitched for durability

Cloth knot buttons



BUTTON STYLE



White Chef Logo



Cloth Knot

ITEM	DESCRIPTION	MATERIAL	COLOR	BUTTON	SIZE
J002	Long Sleeve Jacket	EZ-Blend™	White	Chef Logo	XS-8X
J003	Long Sleeve Jacket	EZ-Blend™	White	Cloth Knot	XS-5X



Classic Short Sleeve Jackets

- EZ-Blend™ material
- Double-breasted with traditional collar
- Drop shoulder and yoke for comfort
- 8 chef logo buttons
- Sleeve thermometer and pen pocket
- Double stitched for durability

Thermometer and pen pocket on sleeve



Short sleeves keep you cool and comfortable.



BUTTON STYLE



White Chef Logo



Black Chef Logo

ITEM	DESCRIPTION	MATERIAL	COLOR	BUTTON	SIZE
J005	Short Sleeve Jacket	EZ-Blend™	White	White Chef	XS-5X
J005BK	Short Sleeve Jacket	EZ-Blend™	Black	Black Chef	XS-5X



Fresh Jackets

In today's new open kitchen environment, crew members need to look their best. Chef Revival offers the balance of value, quality, comfort and durability to stand up to long hours in hot environments, and still be cool.

- EZ-Blend™ material
- Double-breasted with traditional collar
- Black collar and cuffs
- 8 black chef logo buttons
- ¾ length sleeves
- Sleeve thermometer and pen pocket

BUTTON STYLE



Black Chef Logo



Black trim for collar and cuffs

ITEM	DESCRIPTION	MATERIAL	COLOR	BUTTON	SIZE
J134MT	¾ Sleeve Jacket	EZ-Blend™	Mint	Black Chef	XS-5X
J134SP	¾ Sleeve Jacket	EZ-Blend™	Spice	Black Chef	XS-5X
J134TM	¾ Sleeve Jacket	EZ-Blend™	Tomato	Black Chef	XS-5X



Our Cool Crew Snap Jackets combine comfort with the ease and unique design of a hidden snap style button. A pop of red is ideal for trendy restaurants and open kitchen concepts.

Snap Jacket

- EZ-Blend™ material
- Cross collar neckline
- 6 hidden snap buttons
- Side vents to keep you cool
- Sleeve thermometer and pen pocket

Cross-collar neckline

Thermometer and pen pocket on sleeve



Hidden snap closure



Side vents for a better fit



ALL OUR JACKETS ARE EASILY EMBROIDERED WITH YOUR FAVORITE SEAL, LOGO OR NAME. SEE PAGE 41 FOR DETAILS.

ITEM	DESCRIPTION	MATERIAL	COLOR	BUTTON	SIZE
J020TM	Short Sleeve Jacket	EZ-Blend™	Tomato	Hidden Snap	XS-5X



Basic Cook's Jackets

The basic jackets are the true work-horse in chef apparel when it comes to durability, comfort and overall value. The standard poly-cotton blend fabric features a traditional collar, double breasted design, thermometer/pen pocket and the addition of a front chest pocket for frequently-used tools.

- EZ-Blend™ material
- Double-breasted with traditional collar
- 10 pearl buttons
- Sleeve thermometer and pen pocket
- Chest pocket



Thermometer and pen pocket on sleeve



Short sleeves available in both black and white jackets.

BUTTON STYLE



Clear Pearl



Black Pearl



Chest pocket

ITEM	DESCRIPTION	MATERIAL	COLOR	BUTTON	SIZE
J105	Short Sleeve Jacket	EZ-Blend™	White	Clear Pearl	XS-3X
J109BK	Short Sleeve Jacket	EZ-Blend™	Black	Black Pearl	XS-3X
J100	Long Sleeve Jacket	EZ-Blend™	White	Clear Pearl	XS-3X



Crew Jackets

EZ-Blend™ is a versatile poly-cotton blend combining comfort, durability, and ease-of-cleaning.

- EZ-Blend™ material
- Double-breasted with traditional collar
- 8 buttons
- Sleeve thermometer and pen pocket

Thermometer and pen pocket on sleeve



Chest pocket



BUTTON STYLE



Clear Pearl

Cloth Knot

Black Chef Logo

ITEM	DESCRIPTION	MATERIAL	COLOR	BUTTON	SIZE
J049	Long Sleeve Jacket	EZ-Blend™	White	Clear Pearl	XS-5X
J050	Long Sleeve Jacket	EZ-Blend™	White	Cloth Knot	XS-5X
J061BK	Long Sleeve Jacket	EZ-Blend™	Black	Black Chef Logo	XS-5X
J071BK	Long Sleeve Jacket w/ Chest Pocket	EZ-Blend™	Black	Black Chef Logo	XS-5X



Cook Shirts

- Lightweight comfortable poly-cotton blend material
- Short sleeve only
- 6 snap buttons
- Chest pocket



ITEM	DESCRIPTION	MATERIAL	COLOR	BUTTON	SIZE
CS006WH	Short Sleeve Shirt	EZ-Blend™	White	Snap	XS-4X
CS006BK	Short Sleeve Shirt	EZ-Blend™	Black	Snap	XS-4X



T-Shirts

- 100% cotton material
- Soft and comfortable
- Short sleeve
- Silk screened Chef Logo front and back

ITEM	DESCRIPTION	MATERIAL	COLOR	SIZE
TS001	T-Shirt	Cotton	White	M-2X
TS002	T-Shirt	Cotton	Black	M-2X





Chef's Trousers

- EZ-Blend™ material
- Belt loops
- Elastic waistband in back
- Zip fly closure with snap
- 2 side pockets and 2 rear pockets

Back pockets



Side pockets



ITEM	DESCRIPTION	MATERIAL	COLOR	SIZE
P034BK	Trousers	EZ-Blend™	Black	XS-5X
P034HT	Trousers	Yarn Dyed EZ-Blend™	Houndstooth	XS-5X

Cargo Pants

Men's Cargo Pants

- EZ-Blend™ material
- 6 pockets for car keys, cell phones and more - 2 side, 2 rear and 2 snap side leg pockets
- Zip fly closure
- Elastic waistband w/drawstring

Side pockets w/snap closure



ITEM	DESCRIPTION	MATERIAL	COLOR	SIZE
P024BK	Cargo Pants	EZ-Blend™	Black	XS-5X

EZ-Blend™ is a versatile poly-cotton blend combining comfort, durability, and ease-of-cleaning.



Tailored front panel



Ladies Cargo Pants

- EZ-Blend™ material
- 6 pockets for car keys, cell phones and more - 2 side, 2 rear and 2 snap side leg pockets
- Tailored front panel
- Elastic waistband in back
- Comfortably fits curves
- Sizes available: XXS-3X

ITEM	DESCRIPTION	MATERIAL	COLOR	SIZE
LP002BK	Cargo Pants	EZ-Blend™	Black	XXS-3X



Baggy Pants

- EZ-Blend™ material
- Comfy fit
- 2" elastic waistband with drawstring
- 2 side pocket and 2 rear pockets for convenience

Back pockets



Side pockets



ITEM	DESCRIPTION	MATERIAL	COLOR	SIZE
P020BK	Baggy Pants	EZ-Blend™	Black	XS-8X
P020HT	Baggy Pants	Yarn-Dyed EZ-Blend™	Houndstooth	XS-8X

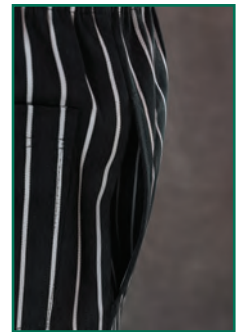


E-Z™ Fit Pants



- EZ-Blend™ material
- Relaxed fit
- 2" elastic waistband with drawstring
- Zip fly closure
- 2 side pockets and 2 rear pockets

Side pockets



ITEM	DESCRIPTION	MATERIAL	COLOR	SIZE
P002BK	EZ™ Fit Pants	EZ-Blend™	Black	XS-5X
P004HT	EZ™ Fit Pants	Yarn-Dyed EZ-Blend™	Houndstooth	XS-5X
P040WS	EZ™ Fit Pants	Yarn-Dyed EZ-Blend™	Black/White Pinstripe	XS-5X



Tools You Can Trust

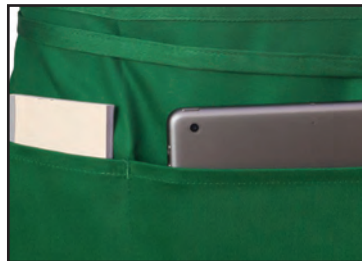
Why settle for anything less? Chef Revival aprons offer only the highest quality fabrics to ensure comfort, consistent color and are made to last. Corners are bar-tack stitched to resist tearing and pocket droop. Chef Revival aprons are designed to work as hard as you do.



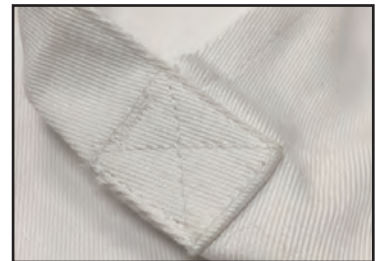
Quality Fabrics



Quality Design



Quality Stitching



ALL APRONS ARE MACHINE WASHABLE AND MAY BE LAUNDERED IN A COMMERCIAL WASHING MACHINE.



Tuxedo Apron

ITEM	POCKETS	MATERIAL	COLOR
VNA3840-BK	2 Front Pockets	EZ-Blend™	Black

- EZ-Blend™ material
- 2 front pockets
- V-neck
- Adjustable neck strap
- 38" ties on each side
- 28"w x 32"h (71 x 81 cm)
- One size fits most



Wide, adjustable strap for maximum comfort

Pencil pocket

New Adjustable Bib Apron

- EZ-Blend™ material
- Pencil pocket
- 1" wide adjustable tie/neck strap
- Bar-tack stitched
- 45" long ties on each side
- 29"w x 34"h (74 x 86 cm)
- One size fits most

An easy slide neck adjustment to modify the apron to your preferred length and comfort. Just pull on the ties to customize your fit.

ITEM	POCKETS	MATERIAL	COLOR
411BA-WH	1 Pencil Pocket	EZ-Blend™	White
412BA-BK	1 Pencil Pocket	EZ-Blend™	Black



Chef Bib Apron

- EZ-Blend™ material
- 2 front pockets
- Adjustable neck strap
- 43" ties on each side
- 29"w x 38"h (74 x 97 cm)
- One size fits most

ITEM	POCKETS	MATERIAL	COLOR
619BA-WS	2 Front Pockets	EZ-Blend™	Black/White Pinstripe



Full Length Bib Apron

- EZ-Blend™ material
- Side pocket can hold a tablet
- 45" long ties on each side
- 28"w x 34"h (71 x 86 cm)
- One size fits most

ITEM	POCKETS	MATERIAL	COLOR
601BAC*	1 Side Pocket	EZ-Blend™	8 Options

*Specify color suffix when ordering

COLORS AVAILABLE



Side pocket with room for a tablet

Gourmet Bib Apron

- EZ-Blend™ material
- Adjustable neck strap
- 3 front pockets
- One pocket can hold a tablet
- 50" long ties on each side
- 28"w x 30"h (71 x 76 cm)
- One size fits most

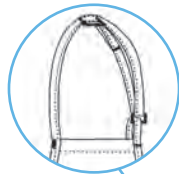
ITEM	POCKETS	MATERIAL	COLOR
601BAO-3*	3 Front Pockets	EZ-Blend™	9 Options

*Specify color suffix when ordering

COLORS AVAILABLE



Adjustable neck strap



3 front pockets with room for a tablet

Perfect for Front-of-the-House use, these versatile bib aprons portray a polished and professional image, while holding guest checks, check presenters, tablets, pens and more.

Professional Bib Apron

- EZ-Blend™ material
- 3 front pockets
- One pocket can hold a tablet
- 45" long ties on each side
- 28"w x 25"h (71 x 64 cm)
- One size fits most

ITEM	POCKETS	MATERIAL	COLOR
602BAFH*	3 Front Pockets	EZ-Blend™	7 Options

*Specify color suffix when ordering

COLORS AVAILABLE



3 front pockets with room for a tablet



Adjustable Bib Apron

- EZ-Blend™ material
- Adjustable neck strap
- 3 front pockets
- One pocket can hold a tablet
- 45" long ties on each side
- 28"w x 27"h (71 x 69 cm)
- One size fits most

Ideal for front-of-the-house use.

ITEM	POCKETS	MATERIAL	COLOR
612BAFH*	3 Front Pockets	EZ-Blend™	7 Options

*Specify color suffix when ordering

COLORS AVAILABLE



Adjustable neck strap



3 front pockets with room for a tablet

Wrinkle-Resistant Bib Apron

- 100% spun polyester
- 3 front pockets
- One pocket can hold a tablet
- 40" ties on each side
- 27"w x 24"h (69 x 61 cm)
- One size fits most

ITEM	POCKETS	MATERIAL	COLOR
602PS-BK	3 Front Pockets	Polyester	Black

3 front pockets with room for a tablet





No Pocket Bib Aprons

- 100% spun polyester
- No pockets
- Wrinkle-resistant
- 40" ties on each side
- 27" w x 32" h (69 x 81 cm)
- One size fits most

A clean, professional look that's great for institutions.

ITEM	POCKETS	MATERIAL	COLOR
600PS-NP-BK	No Pockets	Polyester	Black
600PS-NP	No Pockets	Polyester	White

Economy Bib Aprons

- Poly-cotton or cotton material
- Durable and comfortable
- 40" ties on each side
- One size fits most

A basic bib apron that's comfortable and portrays a polished and professional image.



Easy access thermometer and pencil pocket

600BAW-XL

600BAW-NP

ITEM	DESCRIPTION	POCKETS	MATERIAL	SIZE	COLOR
600BAW	Bib Apron	1 Pencil	55/45 Cotton-poly	34" w x 34" h (86 x 86 cm)	White
600BAW-NP	Bib Apron	No Pocket	55/45 Cotton-poly	34" w x 34" h (86 x 86 cm)	White
600BAW-D	Deluxe Fabric Bib Apron	1 Pencil	65/35 Cotton-poly	34" w x 34" h (86 x 86 cm)	White
600BAW-XL	Extra Wide Bib Apron	1 Pencil	55/45 Cotton-poly	38" w x 30" h (97 x 76 cm)	White
610BAC	Bib Apron	1 Pencil	100% Cotton	36" w x 40" h (91 x 102 cm)	White

"Majesty" Utility Bib Apron

- Polyester with vinyl backing
- Waterproof and fire retardant
- No pockets
- Adjustable neck strap
- 28" ties on each side
- 27"w x 33"h (69 x 84 cm)
- One size fits most



Adjustable neck strap

Polyester with vinyl backing that is waterproof and fire-retardant

ITEM	POCKETS	MATERIAL	COLOR
601-MAJ	No Pockets	Polyester w/Vinyl Backing	Black

Provides excellent protection in an institutional or commercial foodservice environment.



Utility Bib Apron

- Poly-cotton blend material
- Flat front design
- No pockets
- 50" long ties on each side
- 28"w x 34"h (71 x 86 cm)
- One size fits most

ITEM	POCKETS	MATERIAL	COLOR
601NP	No Pockets	Poly-cotton	6 Options

COLORS AVAILABLE





Bistro Aprons with Pockets

Keep your staff looking professional and safe from spills with these long durable, poly-cotton blend, bistro aprons. Convenient pockets to hold frequently used tools: guest check presenter, tablet, pens and more.



- EZ-Blend™ material
- 1 side pocket
- 50" long ties on each side
- 33"w x 30"h (84 x 76 cm)
- One size fits most

1 side pocket



- EZ-Blend™ material
- 2 middle pockets that can hold a tablet
- 50" long ties on each side
- 28"w x 34"h (71 x 86 cm)
- One size fits most

2 front pockets with room for a tablet

ITEM	POCKETS	MATERIAL	COLOR
607BA	1 Pocket	EZ-Blend™	White
607BA-BK	1 Pocket	EZ-Blend™	Black

ITEM	POCKETS	MATERIAL	COLOR
607BA2-WH	2 Pockets	EZ-Blend™	White
607BA2-BK	2 Pockets	EZ-Blend™	Black

BISTRO APRONS

Flip it or turn it around to stay clean



- EZ-Blend™ material
- No pockets
- Stay clean throughout your shift by flipping it or turning it around
- 45" long ties on each side
- 30"w x 33"h (76 x 84 cm)
- One size fits most

ITEM	POCKETS	MATERIAL	COLOR
402WA	No Pockets	EZ-Blend™	White



2-Sided Bistro Apron

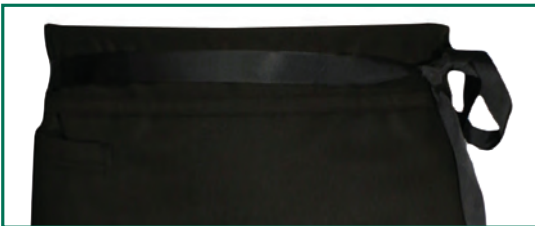
Hip Pocket Bistro Apron

- EZ-Blend™ material
- Right hip patch pocket
- Tangle-free 45" long ties on each side
- 28"w x 33"h (71 x 84 cm)
- One size fits most

1 hip patch pocket

ITEM	POCKETS	MATERIAL	COLOR
A011BK	1 Hip Pocket	EZ-Blend™	Black

Tangle-free ties





Flip 4 ways to stay clean all day

- EZ-Blend™ material
- No pockets
- Stay clean throughout your shift by flipping it or turning it around
- 4-sided construction
- 45" long tangle-free ties on each side
- 28"w x 30"h (71 x 76 cm)
- One size fits most

ITEM	POCKETS	MATERIAL	COLOR
A005	No Pockets	EZ-Blend™	White



4-Sided Chef Apron

Half Bistro Apron

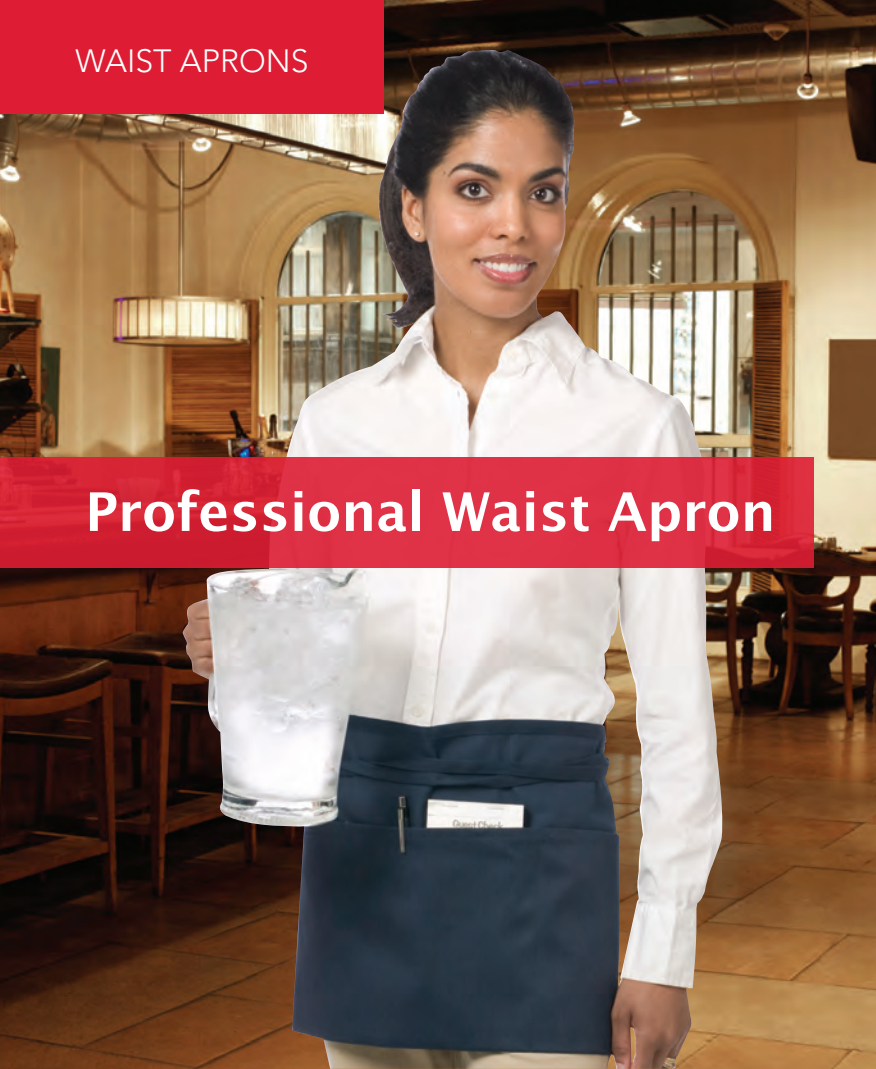


2 front pockets with room for a tablet



- EZ-Blend™ material
- Offers generous storage space
- 2 center pockets can hold a tablet
- 45" long ties on each side
- 28"w x 19"h (71 x 48 cm)
- One size fits most

ITEM	POCKETS	MATERIAL	COLOR
607HBA2-WH	2 Pockets	EZ-Blend™	White
607HBA2-BK	2 Pockets	EZ-Blend™	Black



Professional Waist Apron

- EZ-Blend™ material
- 3 front pockets
- One pocket can hold a tablet
- 45" long ties on each side
- 24w" x 12"h (61 x 30 cm)
- One size fits most



3 front pockets with room for a tablet

ITEM	POCKETS	MATERIAL	COLOR
605WAFH*	3 Pockets	EZ-Blend™	9 Options

*Specify color suffix when ordering

COLORS AVAILABLE



- EZ-Blend™ material
- No pockets
- Stay clean throughout your shift by flipping it or turning it around
- 4-sided construction
- 45" long ties on each side
- 34"w x 17"h (86 x 43 cm)
- One size fits most



4-Way Waist Aprons

ITEM	POCKETS	MATERIAL	COLOR
603FW	No Pockets	EZ-Blend™	White



- 100% spun Polyester
- No pockets
- 41" ties on each side
- 28"w x 17"h (71 x 43 cm)
- One size fits most

ITEM	POCKETS	MATERIAL	COLOR
603FWPS-BK	No Pockets	Polyester	Black

Flip 4 ways to stay clean all day



3-Pocket Waist Apron



- 100% spun polyester
- 3 front pockets
- One pocket can hold a tablet
- 41" ties on each side
- 24"w x 12"h (61 x 30 cm)
- One size fits most

3 front pockets with room for a tablet

ITEM	POCKETS	MATERIAL	COLOR
605PS-BK	3 Front Pockets	Polyester	Black

EZ-Blend™ is a versatile poly-cotton blend combining comfort, durability, and ease-of-cleaning.

Reversible 3-Pocket Apron



3 front pockets with room for a tablet

- EZ-Blend™ material
- Reversible - flip to a clean side
- 3 front pockets
- One pocket can hold a tablet
- 50" long ties on each side
- 24"w x 12"h (61 x 30 cm)
- One size fits most

ITEM	POCKETS	MATERIAL	COLOR
605REV-BK	3 Front Pockets	EZ-Blend™	Black





Chef Headwear

Classic Travel Chef Toque

- Poly-cotton blend
- Adjustable headband
- Includes protective carry bag
- One size fits most



ITEM	DESCRIPTION	MATERIAL	COLOR
H057	9" (23 cm) Tall	Poly-cotton	White

European Chef Hat

- Poly-cotton blend
- Adjustable velcro tab
- Lightweight
- Pleated pattern
- One size fits most



ITEM	DESCRIPTION	MATERIAL	COLOR
CH-EURO	9" (23 cm) Tall	Poly-cotton	White

Professional Chef Hats

- Poly-cotton blend
- Adjustable velcro tab
- Lightweight
- One size fits most



ITEM	DESCRIPTION	MATERIAL	COLOR
H400WH	13" (33 cm) Tall	Poly-cotton	White
H400BK	13" (33 cm) Tall	Poly-cotton	Black

Chef Berets

- Poly-cotton blend
- Adjustable back strap
- Air holes on sides to keep you cool
- One size fits most



ITEM	DESCRIPTION	MATERIAL	COLOR
H036WH	Chef Beret	Poly-cotton	White
H036BK	Chef Beret	Poly-cotton	Black

Chef Beanie

- 100% cotton
- Elastic band on back
- Embroidered Chef logo
- One size fits most



ITEM	DESCRIPTION	MATERIAL	COLOR
H060BK	Chef Beanie	100% Cotton	Black

Disposable Chef Hats

- Non-woven fiber
- Adhesive closure
- Pinstripe pattern
- Sold by the case pack (50 hats per case)
- One size fits most



ITEM	DESCRIPTION	MATERIAL	COLOR
H048	7" (18 cm) Tall	Non-woven Fiber	White
H049	8½" (22 cm) Tall	Non-woven Fiber	White



Crew Headwear

Disposable Flair Chef Hat

- Viscose non-woven fiber
- Adhesive closure
- Vented top
- Sold by the case pack (50 hats per case)
- One size fits most



ITEM	DESCRIPTION	MATERIAL	COLOR
CHR12V	12" (31 cm) Tall	Non-woven Fiber	White

Disposable Corporate Chef Hats

- Non-woven fiber
- Adjustable velcro tab
- Pinstripe pattern
- Sold by the case pack (25 hats per case)
- One size fits most



ITEM	DESCRIPTION	MATERIAL	COLOR
H055	7" (18 cm) Tall	Non-woven Fiber	White
H056	9" (23 cm) Tall	Non-woven Fiber	White

Disposable Euro Chef Hat

- Paper with linen finish
- Adjustable velcro tab
- Sold by the case pack (100 hats per case)
- One size fits most



ITEM	DESCRIPTION	MATERIAL	COLOR
DCH100	9" (23 cm) Tall	Paper	White

Disposable Overseas Cap

- Paper
- Adjustable headband
- Sold by the case pack (1000 hats per case)
- One size fits most



ITEM	DESCRIPTION	MATERIAL	COLOR
DRC100	3" (8 cm) Tall	Paper	White

Baseball Caps

- 100% cotton
- Adjustable strap
- Embroidered Chef logo
- One size fits most



ITEM	DESCRIPTION	MATERIAL	COLOR
H063WH	Baseball Cap	100% Cotton	White
H064BK	Baseball Cap	100% Cotton	Black

Custom Embroidered Baseball Caps

- Your logo submitted in any of the following formats: EPS, TIFF, PDF, JPEG
- 2 week lead-time
- Limited to 1 logo or 2 lines of embroidery
- Available without embroidery



ITEM	DESCRIPTION	MATERIAL	COLOR
H067BK	Embroidered Cap	100% Cotton	Black



Crew Headwear

Pill Box Hat with Mesh Top

- Poly-cotton blend
- Mesh top keeps you cooler
- Elastic band in the back
- Machine washable
- Sizes: Regular (20"-22") or XL (22"-23½")



ITEM	DESCRIPTION	MATERIAL	COLOR
H002*	Pill Box Hat	Poly-cotton	White
H008*	Pill Box Hat	Poly-cotton	Black
H009*	Pill Box Hat	Yarn-dyed PC	Houndstooth
H007*	Pill Box Hat	Poly-cotton	Grey/Black

*Specify size suffix (R or XL) when ordering

Neckerchiefs/ Bandanas

- Poly-cotton blend
- 38" wide
- Doubles as a bandana
- Machine washable
- Absorbs sweat
- One size fits most



ITEM	DESCRIPTION	MATERIAL	COLOR
H500WH	Neckerchief	Poly-cotton	White
H500BK	Neckerchief	Poly-cotton	Black

Disposable Beard Cover

- Soft, non-irritating polypropylene
- Elastic fit
- Latex-free
- Sold by the case pack (1000 per case)
- One size fits most



ITEM	DESCRIPTION	MATERIAL	COLOR
BC1000	Beard Cover	Polypropylene	White

Scarf Hats

- Poly-cotton blend
- Adjustable
- Machine washable
- One size fits most



ITEM	DESCRIPTION	MATERIAL	COLOR
H023WH	Scarf Hat	Poly-cotton	White
H020BK	Scarf Hat	Poly-cotton	Black
H020HT	Scarf Hat	Yarn-dyed PC	Houndstooth

Disposable Hairnets

- Soft, non-irritating polypropylene
- Elastic fit
- Latex-free
- Sold by the case pack (1440 per case)
- One size fits most



ITEM	DESCRIPTION	MATERIAL	COLOR
DHN500-BK-22	22" Hairnet	Polypropylene	Black
DHN500	28" Hairnet	Polypropylene	Brunette
DHN500-BL	28" Hairnet	Polypropylene	Blond

Disposable Bouffant Caps

- Soft, non-irritating polypropylene
- Elastic fit
- Lint-free and anti-static
- Sold by the case pack (1000 per case)
- One size fits most



ITEM	DESCRIPTION	MATERIAL	COLOR
BCAP110CW	24" Bouffant Cap	Polypropylene	White
BCAP110CB	24" Bouffant Cap	Polypropylene	Blue

Look no further for all your service essentials with our Front-of-the-House restaurant wear. We offer a large selection of functional uniforms, from casual to business. Choose from dress shirts, polo shirts, oxfords, vests and t-shirts in easy to care fabrics in both men's and women's styles that are comfortable to wear. Apparel is custom ordered and not a stocked item.



Twill Shirts



- Poly-cotton blend material
- Treated with Dupont™ Teflon® fabric protector
- Wrinkle resistant
- Button down collar and adjustable cuffs
- Patch pocket with pencil compartment
- Bone horn buttons
- Also available in tall: LT-3XLT

COLORS AVAILABLE



A LARGER COLOR SELECTION IS AVAILABLE, PLEASE CONTACT CUSTOMER SERVICE FOR ASSISTANCE.

ITEM	DESCRIPTION	MATERIAL	COLOR	SIZE
CRBG7217	Men's Long Sleeve	Poly-cotton Blend	Ask	Reg XS-6X
CRBG7217S	Men's Short Sleeve	Poly-cotton Blend	Ask	Reg XS-6X
CRBG6217	Ladies Long Sleeve	Poly-cotton Blend	Ask	Reg XS-6X
CRBG6217S	Ladies Short Sleeve	Poly-cotton Blend	Ask	Reg XS-6X

ALL OUR SHIRTS ARE EASILY EMBROIDERED WITH YOUR FAVORITE SEAL, LOGO OR NAME. SEE PAGE 41 FOR DETAILS.

Front-of-the-House items are custom and not stocked

Polo Shirts

- Poly-cotton blend material
- Treated with Dupont™ Teflon® fabric protector
- Classic fit, no pocket
- Short sleeve
- Rib knit collar and cuffs
- Durable and easy care
- Bone buttons



ITEM	DESCRIPTION	MATERIAL	COLOR	SIZE
CRBG7203	Men's Shirt	Poly-cotton Blend	Ask	XS-6X
CRBG6203	Ladies Shirt	Poly-cotton Blend	Ask	XS-6X

FRONT OF THE HOUSE

- 100% cotton material
- Pre-shrunk jersey knit
- Tapered neck
- Double stitched sleeves and hem
- No pockets
- Machine washable

ITEM	DESCRIPTION	MATERIAL	COLOR	SIZE
CR2000	Men's Shirt	100% Cotton	Ask	S-5X
CR2000L	Ladies Shirt	100% Cotton	Ask	XS-3X

COLORS AVAILABLE



A LARGER COLOR SELECTION IS AVAILABLE. PLEASE CONTACT CUSTOMER SERVICE FOR ASSISTANCE.



T-Shirts

Economy Vest



- 100% polyester material
- V neck
- 2 functional pockets
- Machine washable
- Matching color buttons (red vest has gold buttons)
- Also available in tall: S-5X

COLORS AVAILABLE



ITEM	DESCRIPTION	MATERIAL	COLOR	SIZE
CR4490	Vest	100% Polyester	5 Options	Reg S-5X



Bar Towels

Ribbed Bar Mop Towels

- 100% cotton material
- Absorbent
- Narrow-ribbed construction
- Machine washable
- Sold by the dozen



ITEM	SIZE	MATERIAL	COLOR
700BRT24	24 oz, 16" x 19"	100% Cotton	White
700BRT28	28 oz, 16" x 19"	100% Cotton	White
700BRT32	32 oz, 16" x 19"	100% Cotton	White

Full Terry Bar Mop Towels

- 100% cotton terry material
- Narrow-ribbed construction
- Machine washable
- 30 oz
- Sold by the dozen



ITEM	SIZE	MATERIAL	COLOR
701BTT30	16" x 19"	100% Cotton Terry	White

Microfiber Towels

- Absorbent
- Lint-free
- Eliminates streaking
- Sold by pack of 6



ITEM	SIZE	MATERIAL	COLOR
MF100-BL	16" x 16"	Microfiber	Blue

Striped Bar Towels

- 100% cotton
- 32 oz
- Colored stripe allows for color-coding for specific uses
- Machine washable
- Sold by the dozen



ITEM	SIZE	MATERIAL	COLOR
700BRT-BLS	16" x 19"	100% Cotton	Blue Stripe
700BRT-GLS	16" x 19"	100% Cotton	Gold Stripe
700BRT-GRS	16" x 19"	100% Cotton	Green Stripe
700BRT-RDS	16" x 19"	100% Cotton	Red Stripe

Waffle-Weave Bar Towel

- 100% cotton
- Waffle-weave design provides extra scrubbing ability
- Machine washable
- Sold by the dozen



ITEM	SIZE	MATERIAL	COLOR
700WT	18" x 18"	100% Cotton	Natural

Heavyweight Bar Mop Towels

- 100% high-grade absorbent cotton terry material
- Absorbent
- Machine washable
- Sold by the dozen



ITEM	SIZE	MATERIAL	COLOR
HTI250W	40 oz, 15" x 25"	100% Cotton Terry	White
HTI275W	44 oz, 16" x 27"	100% Cotton Terry	White



Bar & Kitchen Towels

Glass Polishing Towel

- 100% cotton material
- Picks up and holds dust and dirt
- Hypoallergenic and lint-free
- Machine washable
- Eliminates streaking
- Sold by the dozen



ITEM	SIZE	MATERIAL	COLOR
702GT	16" x 29"	100% Cotton	Red Pinstripe

Multi Stripe Towels

- 100% cotton terry material
- High quality construction
- Machine washable
- Striped for easy identification
- Sold by the dozen



ITEM	SIZE	MATERIAL	COLOR
705MSK	15" x 26"	100% Cotton Terry	Multi Stripe

Waffle-Weave Dish Cloth

- 100% cotton material
- Waffle-weave design provides extra scrubbing ability
- Machine washable
- Sold by the dozen



ITEM	SIZE	MATERIAL	COLOR
706DC	14" x 14"	100% Cotton	Assorted

Flour Sack Towels

- 100% cotton material
- Lightweight, flour sack material
- Machine washable
- Shaped for long pans
- Sold by the dozen



ITEM	SIZE	MATERIAL	COLOR
704FSTW	22" x 36"	100% Cotton	White
704FST36	36" x 36"	100% Cotton	White

Herringbone Towels

- 100% cotton material
- Low lint and highly absorbent
- Color stripe for easy identification
- Machine washable
- Sold by the dozen



ITEM	SIZE	MATERIAL	COLOR
703HB	15" x 26"	100% Cotton	Green Stripe
703HB28	20" x 28"	100% Cotton	Mixed Colors

Oversized Chef Towel

- 100% cotton terry material
- Premium grade weight (44 oz)
- Color stripe for easy identification
- Machine washable
- Sold by the dozen



ITEM	SIZE	MATERIAL	COLOR
HTI15GS	15" x 25"	100% Cotton	Green Stripe

Quality Kitchen Cutlery



The Next Generation of Quality Kitchen Cutlery!

Dexter Chef Revival offers quality kitchen cutlery featuring taper ground blades, super-sharp edges, and soft-to-the-touch, textured handles for a safe and secure grip. Seven color buttons allow for easy and economical compliance with color coding and food safety programs. All items are made from quality stainless steel and are NSF Certified.

- Superior quality stainless steel
- Super-sharp edges
- Soft, textured handles for comfort and secure grip
- NSF Certified
- 7 color buttons for easy color-coding (all colors are packed with each knife)

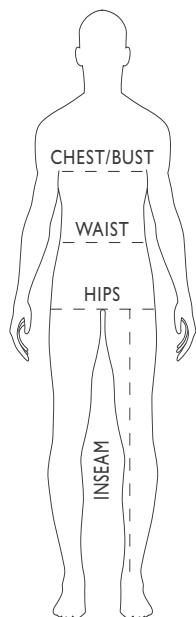


ITEM	DESCRIPTION	PACK
31687	3½" Paring Knife	12
31680	6" Narrow, Stiff Boning Knife	12
31681	7" Butcher Knife	12
31685	7" Duo-Edge Santoku Chef Knife	12
31682	8" Fillet Knife	12

ITEM	DESCRIPTION	PACK
31686	9" Scalloped Offset Slicer	12
31683	8" Cook's Knife	12
31684	10" Cook's Knife	12
31689	10" Scalloped Slicer	12
31688	12" Duo-Edge Slicer	12

Sizing Chart: Inch and Centimeter Measurements

Order size according to your chest or hip measurements, whichever is larger.
Disclaimer: This is intended to be a guide only, and while we do our best to ensure all our sizing is consistent, you may find that some styles vary in size.



Jackets:

Chest/Bust: Measure over clothing to be worn. Measure around fullest part of chest or bust, under the arms and around shoulder blades. Keep tape straight and level.

Pants:

Waist: Measure around natural waistline above hip bones. Don't hold your breath.

Hips: Measure around fullest part of hip.

Inseam Length: Measure from base of crotch seam to top of shoe to be worn.

Note: Styles & cuts could vary in size.

INCHES	XXS	XS	S	M	L	XL	2X	3X	4X	5X	6X*	7X*	8X*
MENS/UNISEX JACKETS													
Chest (inch)	-	32-34	36-38	40-42	44-46	48-50	52-54	56-58	60-62	64-66	68-70	72-74	76-78
LADIES JACKETS													
Female US	-	2	4-6	8-10	12-14	16-18	20-22	24-26	28-30	32-34	-	-	-
Bust (inch)	-	32-33	34-35	36-37	38-40	41-43	45-47	49-51	53-55	57-59	-	-	-
Waist (inch)	-	25-26	27-28	29-30	31-33	34-36	38-40	42-44	46-48	50-52	-	-	-
Hip (inch)	-	35-36	37-38	39-40	41-43	44-46	48-50	52-54	56-58	60-62	-	-	-
MENS/UNISEX PANTS													
Waist (inch)	-	24-26	28-30	32-34	36-38	40-42	44-46	48-50	52-54	56-58	60-62	64-66	68-70
Hip (inch)	-	34-36	38-40	42-44	46-48	50-52	54-56	58-60	62-64	66-68	70-72	74-76	78-80
Inseam Length (inch)	-	30	32	33	34	34	34	34	34	34	34	34	34
LADIES PANTS													
Waist (inch)	18-19	20-21	22-23	24-25	26-27	28-30	32-34	36-38	40-42	-	-	-	-
Hip (inch)	38	40	42	44	46	48	50	52	54	-	-	-	-
Inseam Length (inch)	28	30	32	33	34	34	34	34	34	-	-	-	-

CENTIMETERS	XXS	XS	S	M	L	XL	2X	3X	4X	5X	6X	7X	8X
MENS/UNISEX JACKETS													
Chest (cm)	-	81-86	91-96	101-106	111-116	121-127	132-137	142-147	152-157	162-167	-	-	-
LADIES JACKETS													
Female European	-	32	34-36	38-40	42-44	46-48	50-52	54-56	58-60	62-64	-	-	-
MENS/UNISEX PANTS													
Waist (cm)	-	61-66	71-76	81-86	91-96	101-106	111-116	121-127	131-137	142-147	152-157	162-167	172-177
Hip (cm)	-	86-91	96-101	106-111	116-121	127-132	137-142	147-152	157-162	167-172	177-182	187-193	198-203
Inseam Length (cm)	-	76	81	83	86	86	86	86	86	86	86	86	86
LADIES PANTS													
Waist (cm)	45-48	50-53	55-58	60-63	66-68	71-76	81-86	91-96	101-106	-	-	-	-
Hip (cm)	96	101	106	111	116	121	127	132	137	-	-	-	-
Inseam Length (cm)	71	76	81	83	86	86	86	86	86	-	-	-	-



Quality In-House Custom Embroidery

Our state-of-the-art embroidery machines create designs that are precise, clean and can tackle your order quickly and professionally. We only run top of the line embroidery equipment to ensure your logo looks the best it possibly can! Your logo can be embroidered on any garment. Choose your location and font styles, a variety of thread colors, and durable embroidered flag insignias that can be applied to collars, cuffs and headwear.

For ACF Members, Chef Revival is officially licensed for the embroidered logo of the American Culinary Federation that can easily be added to your apparel.

How to Order

Custom Logos

Please submit logo files in AI, CDR, PDF, and EPS formats to orders@chefrevival.com. There is a one-time digitizing set-up charge. Charges will vary depending upon stitch count. For embroidery orders, please allow up to 10-14 business days from approval of artwork for orders to ship from our North Charleston, SC warehouse. Embroidered garments cannot be returned.



Color Options

Choose from a vast array of colors. For a custom color, please have your Pantone number readily available.



Text

Space is limited up to 20 characters (including spaces) for all jackets, and you can embroider up to three lines of text on most garments.

Font Options

Listed are some of our more popular font styles.

Chef Revival Font 10

CHEF REVIVAL Font 20

Chef Revival Font 30

CHEF REVIVAL Font 40

Chef Revival Font 50

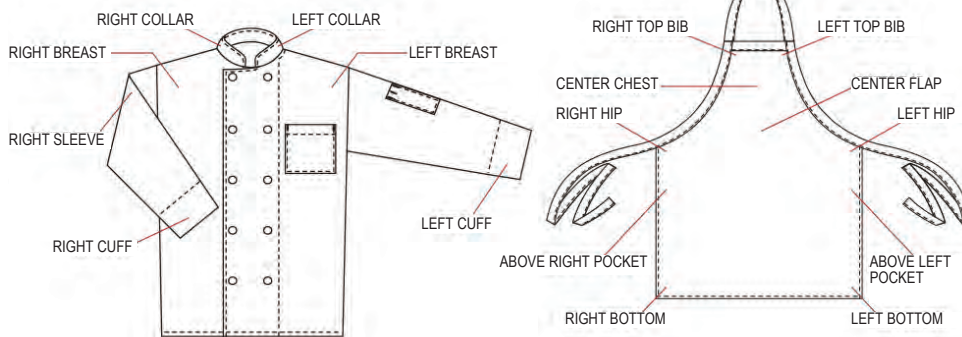
Chef Revival Font 60

Chef Revival Font 70

Chef Revival Font 80

Placement

Embroidery placement is referred to as from the vantage point of someone wearing the garment (i.e. Left Breast = Heart Side).



Call Customer Service if you have any questions regarding our state-of-the-art custom embroidery.

Flags

International embroidered flags are available. Collar placement is one per side.





Ryan Trinkofsky
Corporate Chef, Dexter/ Chef Revival

Join us for our next Dexter **PROTOUR™**

The Dexter PROTOUR™ is a state-of-the-art, mobile cutlery education center designed to present the features and processes for the manufacture of professional quality cutlery.

This unique presentation will teach culinary students how these knives are created and why it is important to have quality kitchen tools.

To learn more visit: dexter1818.com/information/dexter-protour/



DEXTER
THE EDGE SINCE 1818



Chef Revival
44 River Street
Southbridge, MA 01550

Tel: (508) 765-0201
Fax: (508) 764-2897
1-800-352-CHEF (2433)



email: customercare@chefrevival.com
ChefRevival.com

